

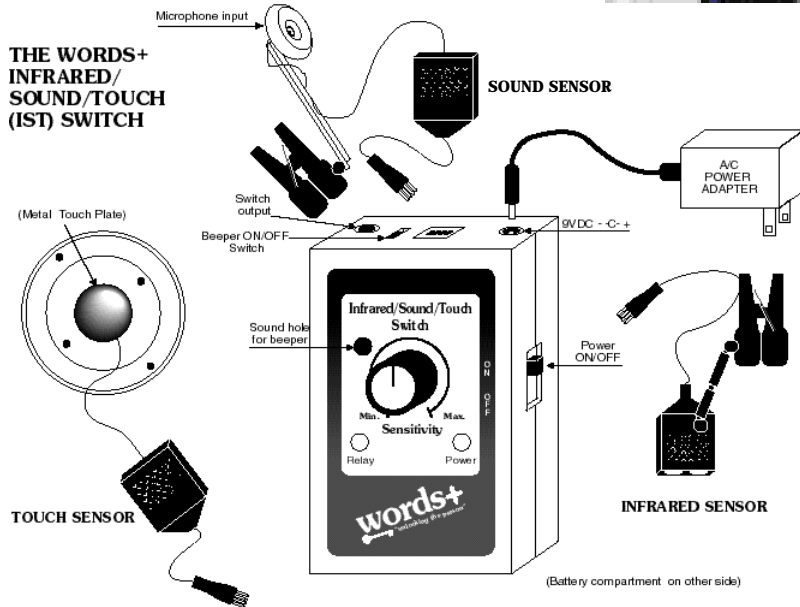


Infrared/Sound/Touch (IST) Switch

Product Specifications Sheet



Operate Virtually any AAC Device
With as Little as the Blink of an Eye.



Weight:

- IR Sensor - .8 oz.
- Sound Sensor - .9 oz.
- Touch Sensor - .8 oz.
- IST Switch with battery - 4.5 oz.

Dimensions:

- IST Switch - 3.75" L x 2.375" W x 1" H

The Words+ Infrared/Sound/Touch (IST) Switch represents a breakthrough in switch technology for the severely physically disabled.

You will find the Words+ IST Switch to be an extremely versatile device, with the ability to

be easily relocated for activation by a wide variety of body movements. The Infrared Sensor detects motion toward the sensor or into its field of view. The Sound sensor detects slight vocalizations (such as a hum), or can be activated by breathing on the sensor. The Touch Sensor is activated by skin contact - no force is required.

Power

The Words+ IST Switch is designed to operate on battery or AC power. An AC power supply with 9-volt DC output through a 3.5 mm coaxial plug (be sure to have the tip positive) can be used with your unit (such as the Radio Shack part number 273-1651C). Regular 9-volt batteries can also be used (alkaline batteries will last longer), as well as 9-volt rechargeable batteries. The operating time on a replaceable battery or the time

between changes on rechargeable batteries will vary depending on the user. Morse Code users, for example, will require greater power, and will, therefore, need fresh batteries sooner than users of scanning systems, which require fewer switch activations. AC adapter is included.

Setup

- Setting up the Words+ IST Switch is a simple process of (1) connecting the appropriate power source,
- (2) plugging in the appropriate sensor,
- (3) positioning the sensor, and (4) setting the sensitivity adjustment.

1 - Connect Power

(Note: When the AC power adapter is plugged into the switch, the battery is automatically disconnected - it is not recharged!)

Words+, Inc.

www.words-plus.com • info@words-plus.com

1220 W. Avenue J • Lancaster, CA 93534-2902

Phone: 800-869-8521 • Fax: 661-723-2114 • International: 661-723-6523

Note: Specifications are subject to change without prior notice.

Revised 2/20/04