

Micro CommPac™

Instructional Guide

Integrated

Communication

Systems

And Computer

Access Software

Designed

For the Way

You Live




Introduction

Congratulations! You have obtained the most advanced voice software system ever developed for Words+, Inc. augmentative communication Windows based software – E Z Keys™ and Talking Screen™.

This Micro CommPac with Eloquence™ or DEctalk™ software synthesized voice with E Z Keys or Talking Screen will allow more portability and reliability than any other adapted access system developed to date.

This instructional guide is designed to assist you in installing both the Micro CommPac and Eloquence or DEctalk on your computer system. If you experience any difficulty with the installation, Words+ Technical Support is just a phone call away at (800) 869-8521 in the U.S. and Canada and (661) 723-6523 international.

 **Note:** In order for Eloquence to operate in either Windows 3.xx or Win '95, you must have:

- Either Talking Screen version 1.04h or later or
- E Z Keys version 2.0a or later

AND

a Windows based computer system composed of the following items: Pentium processor running at 133MHz, 32M RAM and 83MB free hard disk space. These are the most basic requirements. Both Eloquence and DEctalk require a sound system capable of playing .wav files. (If you are unsure if you have such a system, check your computer documentation, or contact the manufacturer.)

 **Note:** DEctalk operates in Windows 95 or higher.

You should find the following items included in your Micro CommPac/Eloquence package:

- 1 Micro CommPac w/ velcro strips attached
- 1 Eloquence disk package w/ License Agreement
- 1 A/C charger (Western Hemisphere orders only)
- 4 white clips used for routing the speaker wire
- 1 Words+ Owner Registration Card

Attaching the Micro CommPac

Before actually attaching the Micro CommPac to the lid of your computer, experiment placing the Micro CommPac on the computer to see how it best suits your needs. Remember to allow enough distance to connect the ribbon cable to the computers parallel port. As long as the cables are connected and are not pulled tight, there is really no right or wrong way to mount the unit to your computer. You will find strips of velcro attached to the bottom of the Micro CommPac with a protective plastic film still applied. When you decide where you wish to mount the Micro CommPac, peel off the protective film and attach the unit firmly to the lid of the computer. The velcro will hold the Micro CommPac securely in

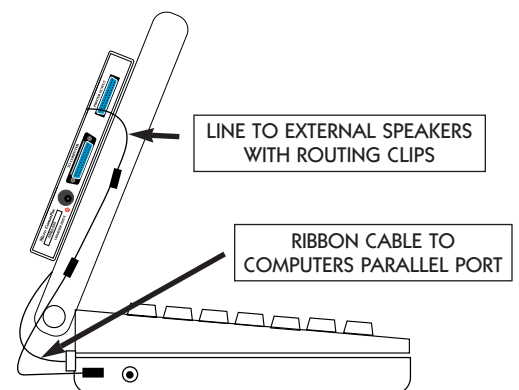


Figure 1a - Connections

place. Connect the wide cable to the printer port on your computer. Insert the right angle jack into the external speaker jack of the computer. If you're not sure where the external speaker jack is, refer to your computer's users manual. Route the connecting wire in such a way so as not to interfere with computer use or the possibility of causing damage by being caught and tangled on something. Using the provided clips, peel the film off the back and place where needed to hold the wire in place (See Diagram 1a). Call our technical support line at (800) 869-8521 if the speaker wire or ribbon cable lengths are not the proper length.

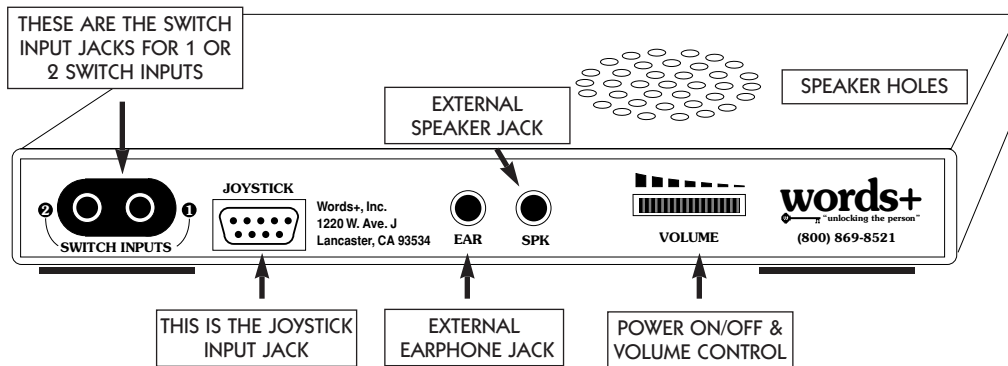
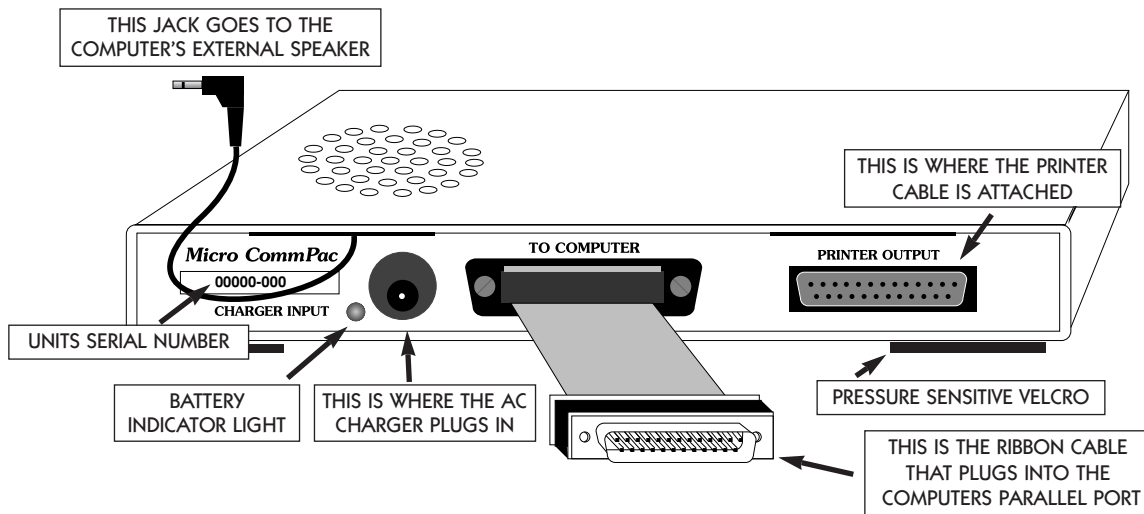


Figure 1b - Side views of the Micro CommPac

Battery and A/C Adapter

The Micro CommPac requires 10 to 15 hours for a full charge. The Ni-MH batteries inside the Micro CommPac need to be charged and discharged. It is best to use the Micro CommPac without plugging in the AC adapter and run it until its battery is completely discharged. If the unit is always being used with the AC adapter plugged into a power outlet, the Micro CommPac will not maintain its ability to hold a charge. If this happens, go back to using the Micro CommPac until its completely drained, then recharge it. Typically, it will recover its ability to hold a charge after a few charges and discharges. The battery indicator light near the A/C charger jack will light green when the unit is charging. It will light red when the unit needs to be charged and no light indicates that it has a good charge.

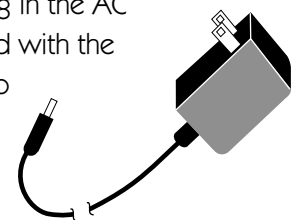


Figure 1c - AC Adapter

If your A/C Adapter becomes lost or broken, call Words+ for a replacement at a nominal charge. However, most A/C adapters (either 50 or 60 Hz) that provide an output of 12 VDC to 35VDC and at least 300mA will work fine. The connector on the adapter must be a 2.1mm female coaxial plug. We have designed the Micro CommPac so that either positive tip or negative tip is acceptable.

Eloquence Installation

1. Start Microsoft Windows by turning on your computer.
2. Insert the Eloquence disk into your floppy disk drive.
3. Choose RUN from the Program Manager or Taskbar.
4. Type: a:\setup (where "a" is the letter designation of your floppy drive.)
5. Once setup is complete, restart Talking Screen or E Z Keys (whichever one you have) in order to make Eloquence available to the system.
6. From the Voice Menu in either TSWIN or EZKWIN, be sure that the voice synthesizer for both the USER and FEEDBACK voice are set to "Eloquence."

DECTalk Installation

For Windows 95 or higher

1. From the Taskbar, select Start > Run
2. type d:\setup
3. where "d" is the letter of your CD ROM

Selecting Eloquence from the Voice Menus

Below are examples of the Voice Menus in both Talking Screen and E Z Keys. To select the Eloquence Voice, click on the down arrow at the Synthesizer window in both the USER and FEEDBACK window. (Voice name in Talking Screen). You can change the rate, pitch or volume as best suits your needs. To test your choice, type a word or phrase in the practice area and then press Enter.

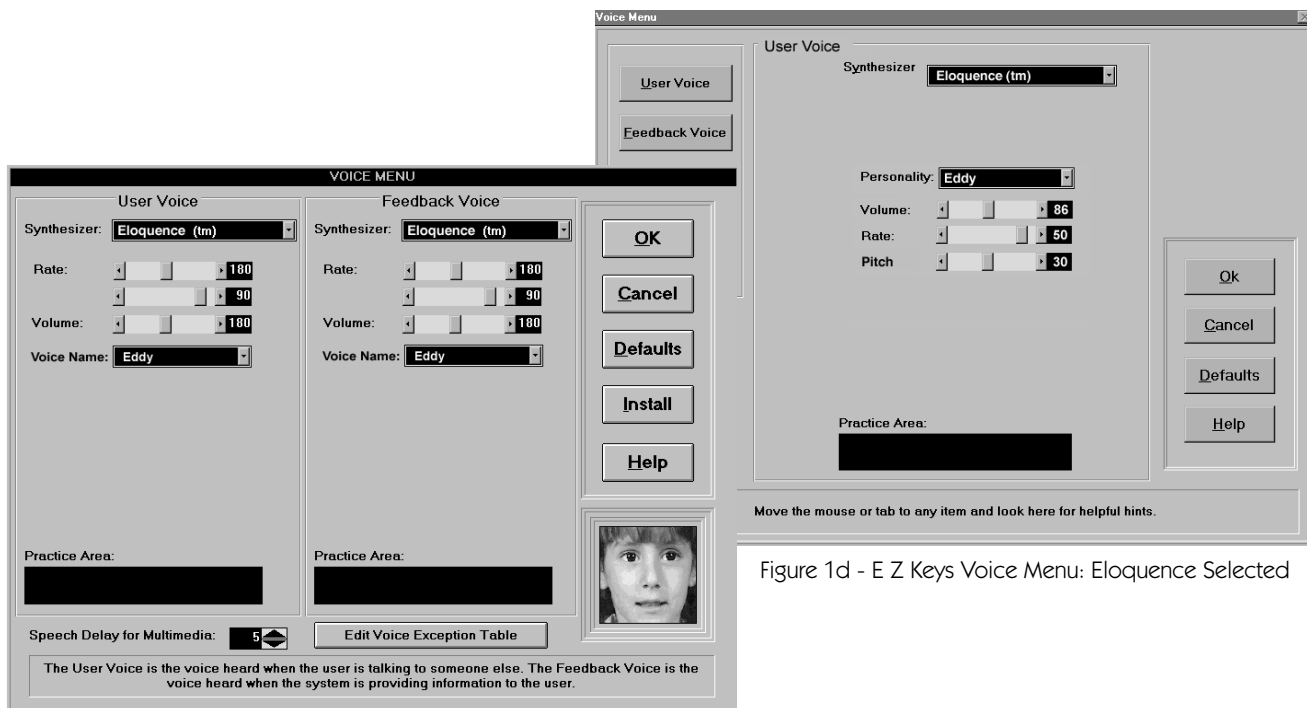


Figure 1e - Talking Screen Voice Menu: Eloquence Selected

Figure 1d - E Z Keys Voice Menu: Eloquence Selected

Selecting DECTalk from the Voice Menu

Below are examples of the Voice Menus in both Talking Screen and E Z Keys. To select the DECTalk Voice, click on the down arrow at the Synthesizer window in both the USER and FEEDBACK window. (Voice name in Talking Screen). You can change the rate, pitch or volume as best suits your needs. To test your choice, type a word or phrase in the practice area and then press Enter.

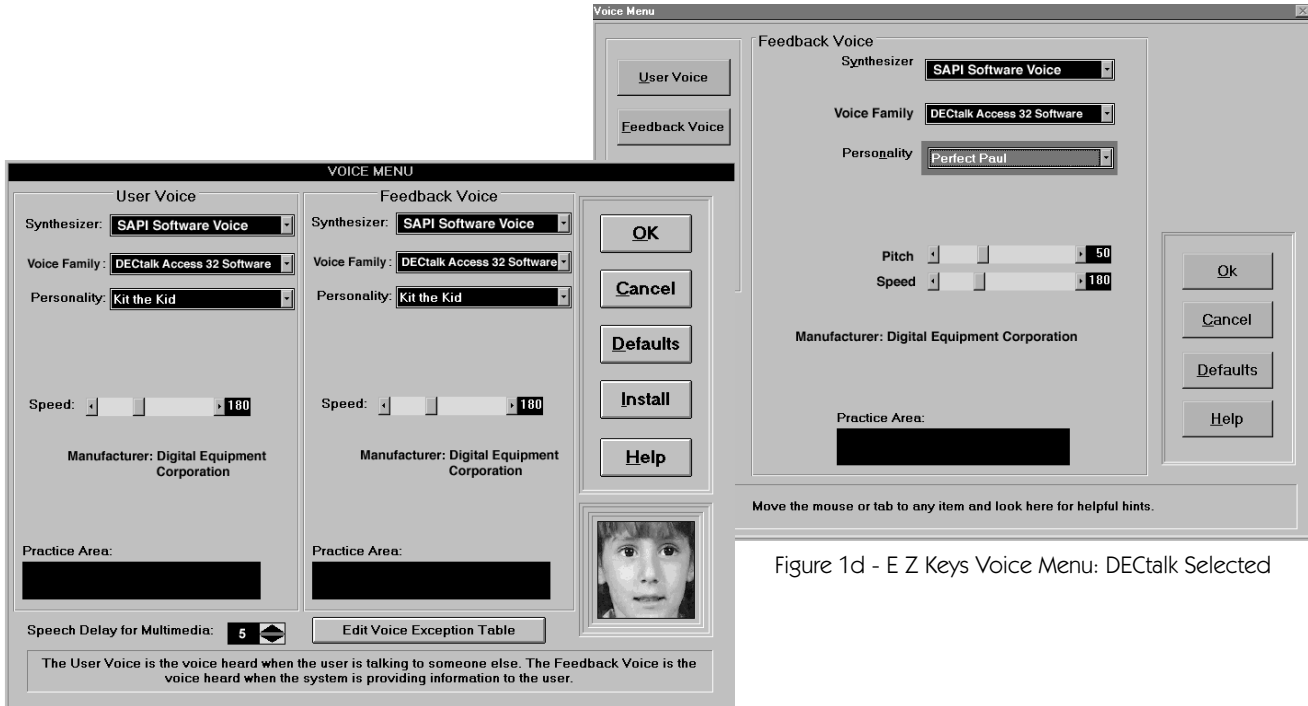


Figure 1e - Talking Screen Voice Menu: DECTalk Selected

Figure 1d - E Z Keys Voice Menu: DECTalk Selected

FCC Compliance Declaration of Conformity

Trade name:	AAC Accessory
Model number:	Micro CommPac
Compliance test report number:	A70224E1
Compliance test report date:	Feb. 24, 1997
Responsible party (in U.S.A.):	Words+, Inc.
Address:	1220 W. Avenue J, Lancaster, CA 93534-2902
Telephone:	(661) 723-6523

This equipment has been tested and found to comply with the limits for a Class B digital device, pursuant to Part 15 of the FCC rules. These limits are designed to provide reasonable protection against harmful interference in a residential installation. This equipment generates, uses, and can radiate radio frequency energy and, if not installed and used in accordance with the instructions, may cause harmful interference to radio communications. However, there is no guarantee that interference will not occur in a particular installation.

If the unit does cause harmful interference to radio or television reception, please refer to your user's manual for instructions on correcting the problem.

I the undersigned, hereby declare that the equipment specified above conforms to the above requirements.

Place: Los Angeles County

Signature: _____

Date: May 13, 1997

Full Name: Virginia E. Woltosz Position: Senior Vice President

Instruction to the User

This equipment has been tested and found to comply with the limits for a class B digital device, pursuant to part 15 of the FCC Rules. These limits are designed to provide reasonable protection against harmful interference in a residential installation. This equipment generates, uses and can radiate radio frequency energy and if not installed and used in accordance with the instructions, may cause harmful interference to radio communications. However, there is no guarantee that interference will not occur in a particular installation. If this equipment does cause harmful interference to radio or television reception, which can be determined by turning the equipment off and on, the user is encouraged to try to correct the interference by one or more of the following measures:

- Reorient or relocate the receiving antenna.
- Increase the separation between the equipment and receiver.
- Connect the equipment into an outlet on a circuit different from that to which the receiver is connected.
- Consult the dealer or an experienced radio/TV technician for help.

In order to maintain compliance with FCC regulations, shielded cables must be used with this equipment. Operation with non-approved equipment or unshielded cables is likely to result in interference to radio and TV reception. The user is cautioned that changes and modifications made to the equipment without the approval of manufacturer could void the user's authority to operate this equipment.